



# PRODUCT CATALOG

System | Brackets | Wires | Bands and Tubes | Instruments



Since 1933, Rocky Mountain Orthodontics (RMO®) has been on the forefront of innovation and continuous improvement of products and services in the orthodontic industry. RMO® introduced many advancements to the industry such as: stainless steel, which eliminated the use of precious metals, computer aided diagnostics, and the utilization of metal injection molding (MIM).

These technologies have since become worldwide industry standards due to the effectiveness, accuracy and production efficiencies. Through the years, RMO® has pioneered the industry with a strong emphasis on innovation and collaboration.

RMO® is much more than a business and model of excellence among Colorado corporations; it is the first privately held orthodontic firm in the United States and is a Colorado institution with history tightly linked to Denver and orthodontics itself.

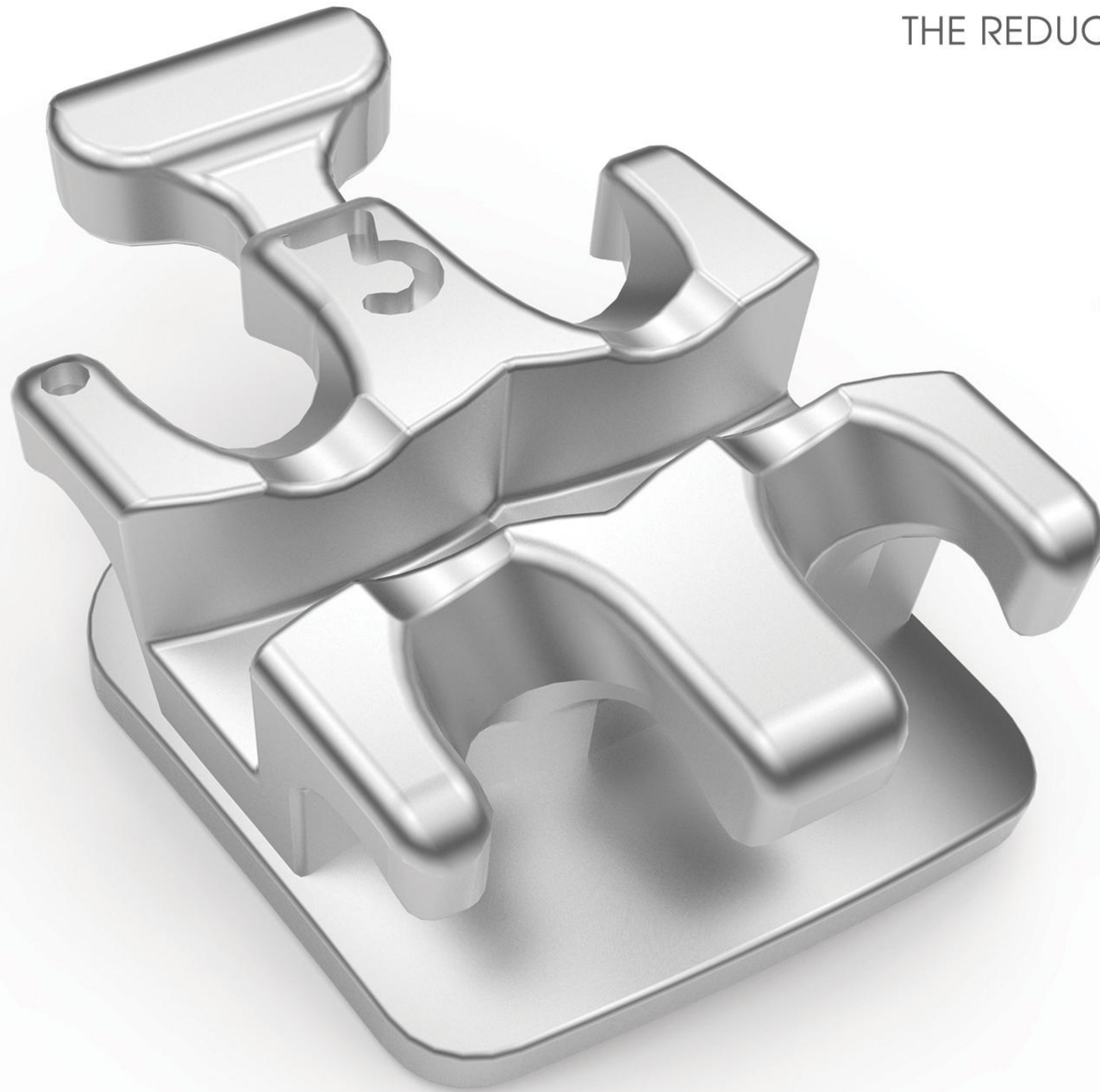
COMPANY PROFILE

2165 Earlywood Drive,  
Franklin, IN 46131



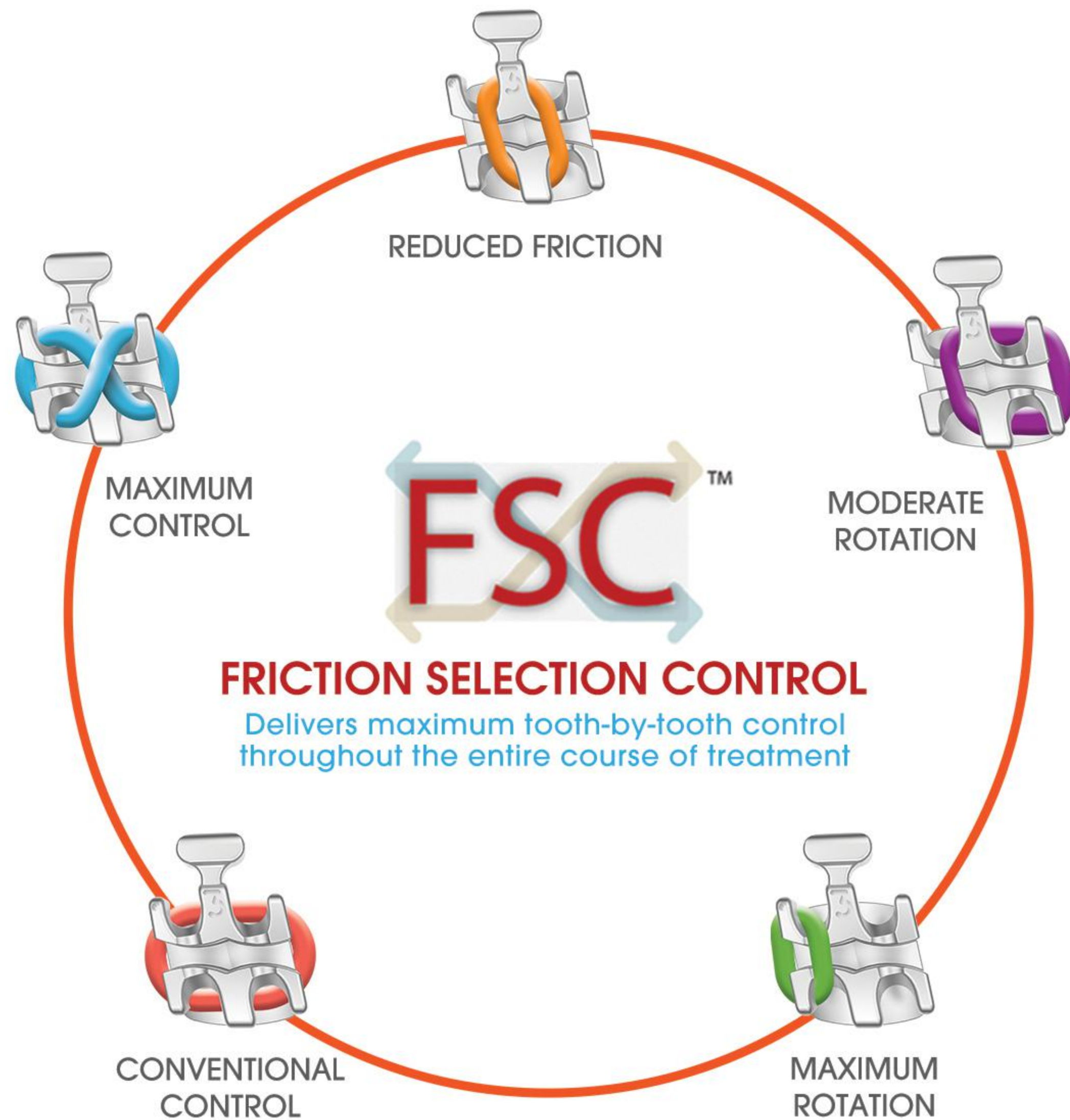
SYNERGY®

THE REDUCED FRICTION APPLIANCE SYSTEM.



MOST  
**VERSATILE**  
**BRACKET**  
ON THE MARKET

**Synergy** brackets are the most versatile brackets on the market. the tri-wing design provides more treatment options than conventional twin brackets with added features.



## FEATURES

Tri-wing Design

Rounded arch slot walls

Rounded arch slot floor

Permanent ID marking

Center scribe

Two-piece MIM, 80-Gauge Mesh Pad

Torque-in-base

## BENEFITS

Maximize tooth-by-tooth control via Friction selection control (FSC)

Decreases friction, deflection and binding of wire. Ease in wire insertion

Reduces friction since arch wire contacts at only two points.

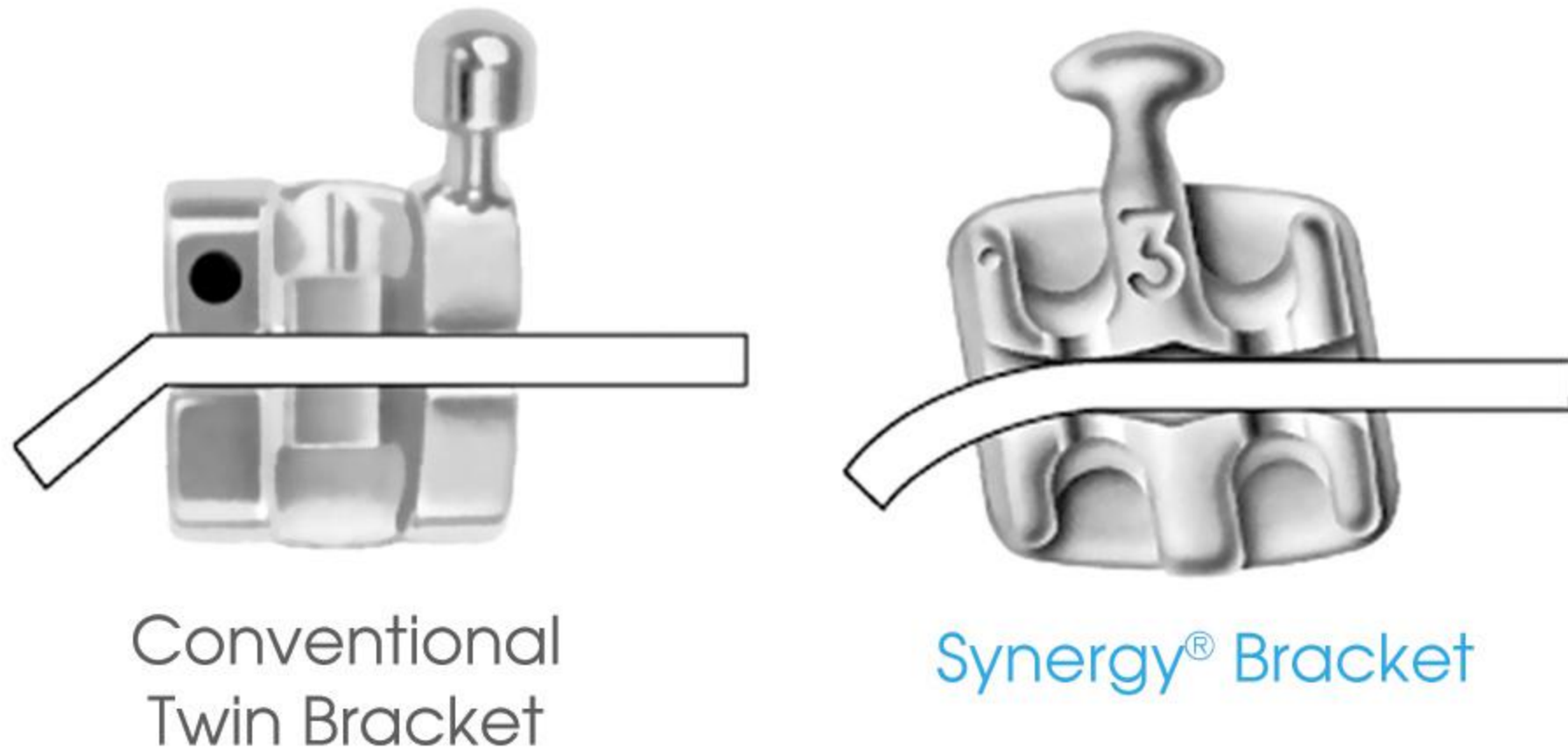
Quick and accurate identification

Offers precise bracket placement

Consistent, strong, predictable bonding

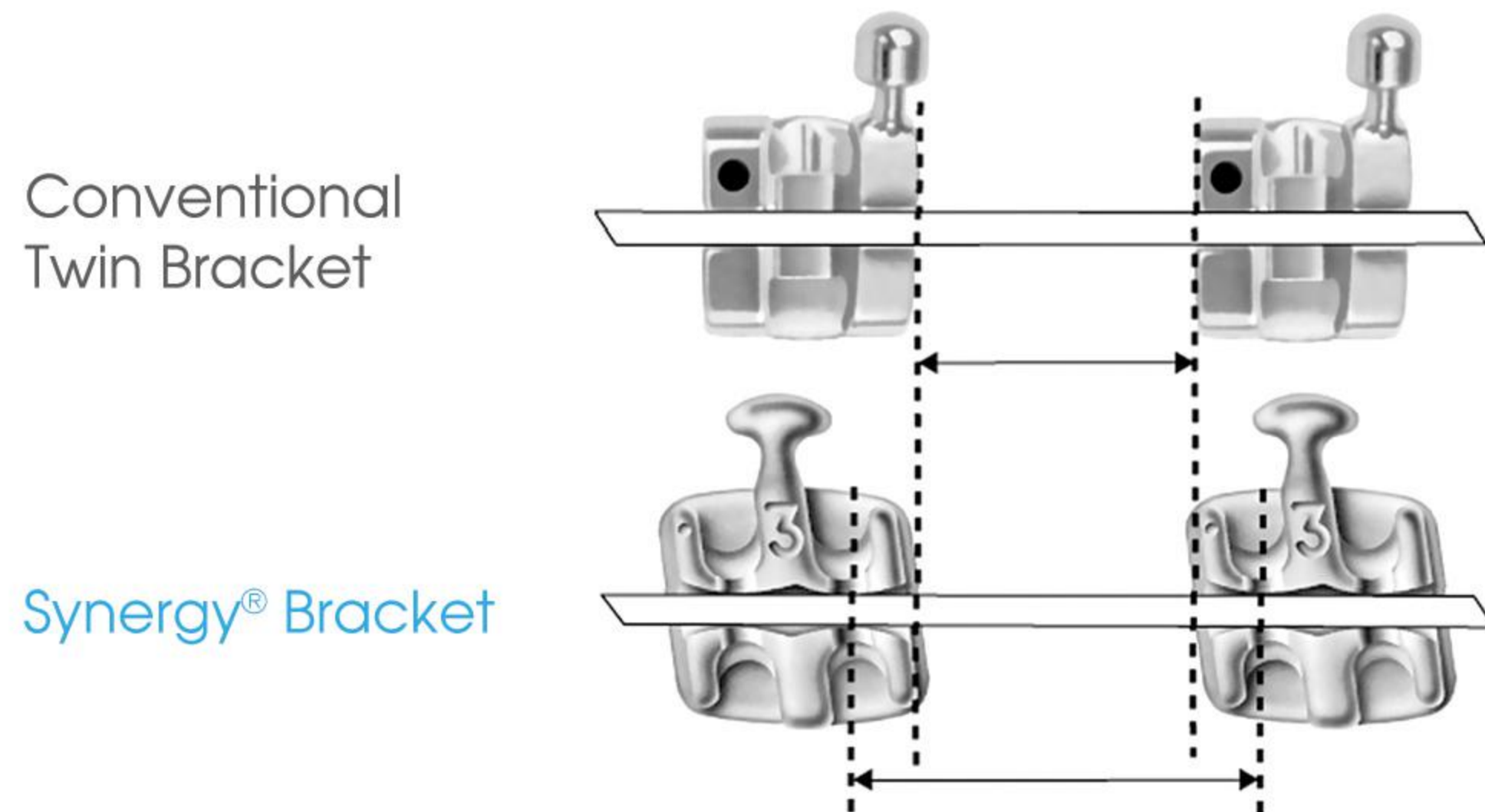
Provides optimal slot alignment and reduces guesswork and chair time.

SYNERGY SYSTEM



## GENTLER ARCHWIRE DEFLECTION

Rounded arch walls allow tangential contact of the arch wire and flared arch slot opening, thus avoiding binding and kinking as the arch wire enters or exits the arch slot. This feature also makes it easier to insert the arch wire into the arch slot.



## LONGER INTERBRACKET DISTANCE

Longer inter bracket distance allows the wire to move more passively inside the slot delivering forces in the optimal range. The interplay between brackets and the arch wire will not cause any undesirable side effects such as bone and root resorption, pain and discomfort to the patient, and anchorage loss.



# SWLFF<sup>®</sup>

STRAIGHT WIRE LOW FRICTION

COMPLETE  
ORTHODONTIC  
LOW FRICTION  
SOLUTION

# “ A Unique And Powerful Combination of the Synergy Bracket with the Super Wires ”

SWLF System is a combination of a low friction passive / active bracket and a new super-elastic wires for each stage of treatment. SWLF System ensures orthodontic movement is fast and easy.



Allows friction selection control in all stages of orthodontic treatment that reduce treatment time up to 30%.

*Prescription: The unique combination of MBT and Roth prescription allows full torque control during retraction mechanics*

## Wire Selection

New super-elastic wires have been developed for the SWLF System. Their special properties make it bone friendly thereby reducing extraction and enhancing tooth movements.

 **THERMALLOY**<sup>®</sup>

Thermal Niti Archwire

For light, constant and prolonged activation during Alignment and Leveling

**TRU-CHROME**<sup>®</sup>

Stainless Steel Archwire

for Space Closing

**bendaloy**<sup>®</sup>

Nickel Free Beta Titanium Archwire to achieve the perfect balance between elasticity, resilience and ability to conform during Finishing stage



# SWLF<sup>®</sup> KIT

**SWLF Kit includes:**  
 Synergy Bracket System  
 Super Elastic Wires Upper and Lower  
 Friction and Wire Selection Guide

**Friction and Wire Selection Guide**  
 for ease in different ligation selection  
 and precise wire application.

MULTIPLE LIGATING OPTIONS				
TREATMENT PHASE	INCISORS	CANINES	PREMOLARS	
ALIGNMENT				
LEVELING				
SPACE CLOSING				
FINISHING				
 <b>SWLF ALIGNMENT IRREGULARITY INDEX</b> 				
<small>EXCLUSIVELY DISTRIBUTED BY:</small>  <small>768 Gen. Malvar Street, Malate, Manila, Philippines        Phone: (+632) 8526 2911   8526 3870   8524-0331        Email: customerservice@prosapac.com</small>				

SWLF <sup>®</sup> SYNERGY BRACKET SYSTEM						
		.018		.022		
		ARCH WIRE		ARCH WIRE		
		Maxillary	Mandibular	Maxillary	Mandibular	
ALIGNMENT	<b>HIGH</b>	Thermalloy Natural Arch A07310	.013 RD A07309	.013 RD A07311	.015 RD A07331	
	<b>MEDIUM</b>	Thermalloy Natural Arch A07311	.015 RD A07311	.017 RD A07312	.017 RD A07332	
	<b>LOW</b>	Thermalloy Natural Arch A07304	.016 x .022 A07304	.016 x .022 A07305	.017 x .025 A07305	
LEVELING	<b>NORMAL</b>	Thermalloy Natural Arch A07305	.017 x .025 A07305	.016 x .022 A07304	.019 x .025 A07307	.017 x .025 A07305
	<b>DEEP BITE</b>	Reverse Curve A07056	.017 x .025 A07056	.016 x .022 A07075	.017 x .025 A07068	.017 x .025 A07076
	<b>OPEN BITE</b>	Reverse Curve A07056	.017 x .025 A07056	.016 x .022 A07075	.017 x .025 A07068	.017 x .025 A07076
SPACE CLOSURE	<b>NO</b>	Stainless Steel Natural Arch A07208	.017 x .025 A07208	.016 x .022 A07227	.019 x .025 A07210	.017 x .025 A07208
	<b>YES</b>	Stainless Steel Natural Arch A07208	.017 x .025 A07208	.017 x .025 A07228	.019 x .025 A07219	.019 x .025 A07230
FINISHING	<b>Children or Young Adults</b>	Braded S.S. E00040	.017 x .025 E00040	.017 x .025 E00041	.019 x .025 E00042	.019 x .025 E00043
	<b>Adults or Periodontal Patients</b>	Bendalloy Natural Arch A07125	.017 x .025 A07125	.017 x .025 A07135	.019 x .025 A07138	.019 x .025 A07137



# Sample cases treated using SWLF Technique

Case 1

Case 2

Case 3

Case 4

Case 5

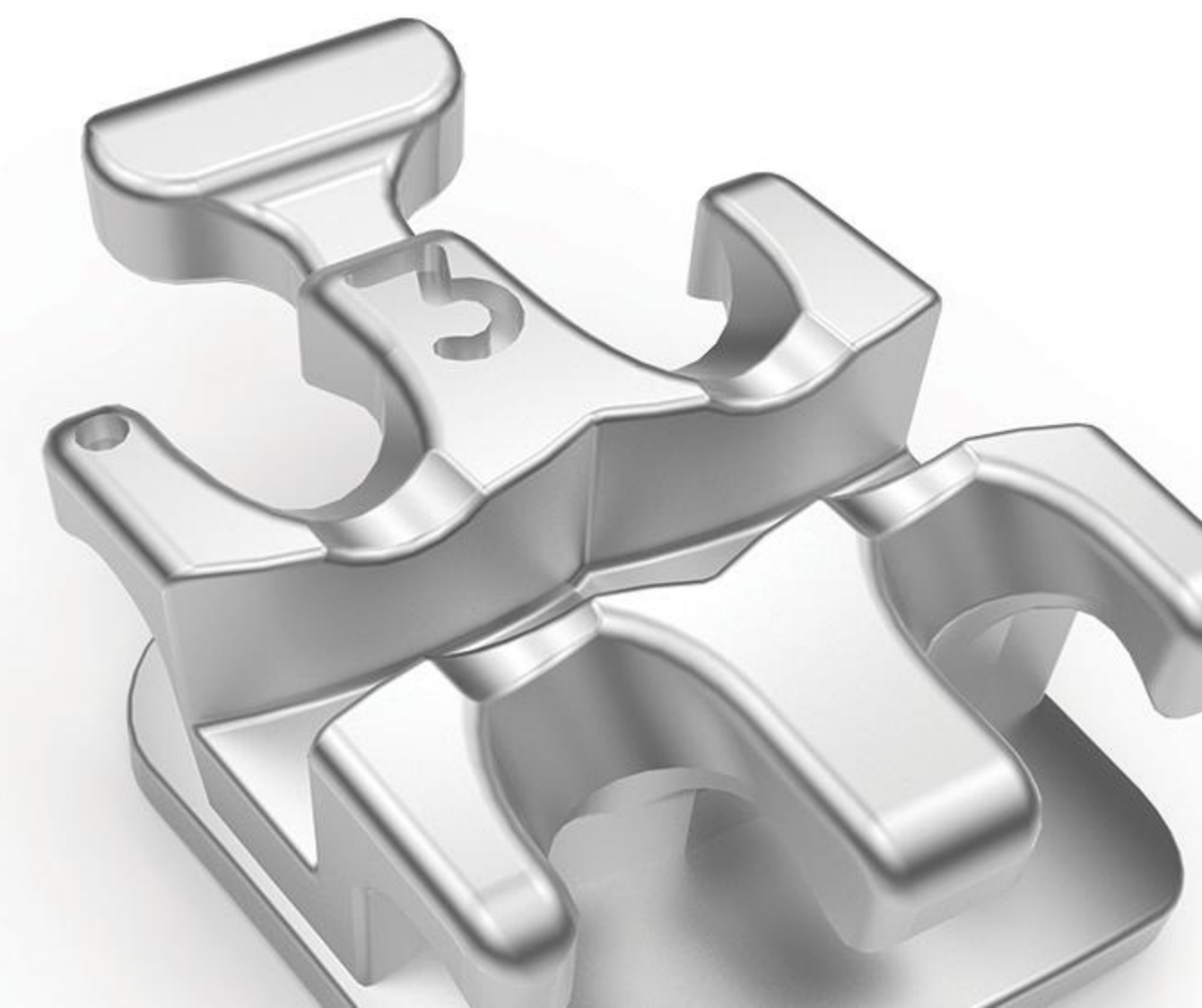
Before



During



After



# FLI<sup>®</sup> TWIN BRACKET

FLI<sup>®</sup> Twin Brackets offer high quality in true twin design. Smooth, rounded contours assure both gentle aesthetics and enhanced patient comfort. The FLI<sup>®</sup> Twin bracket system features a color quadrant identification system and tooth specific pads to improve bonding efficiency and reduce chairtime. Chamfered facial lead-ins and a flared entry support quick and easy wire changes.

- Ball hooks protect patients' soft tissue in oral cavity
- Color quadrants for easy identification
- Tooth specific pad ensures superior bond and fit
- Flared Entry
- Chamfered facial lead-ins
- Torque-in-base design for optimal slot alignment
- Center scribe for visual placement

**Material:** 316 L Stainless Steel

**BASE:** 316 L Stainless Steel 80-gauge Foil-Mesh TM- 80 Gauge is preferred mesh size for maximum bond strength as shown in multiple studies, It is the industry standard mesh size.

**PRESCRIPTIONS:** Roth, MBT, & Ricketts Original Bioprogressive

**SLOT SIZE:** .018 & .022

# I N T E G R A

RMO®'s low profile bracket, Integra, has a totally integrated design. The complete bracket, including the base, is molded as one unit and is manufactured using metal injection molding (MIM) giving it great strength in an aesthetically pleasing size.



- Permanent Identification Marking
- Integrated Hook
- Center scive for precise bracket placement
- Low profile smooth-round contours
- RMO® base designed to provide optimal bond and strength

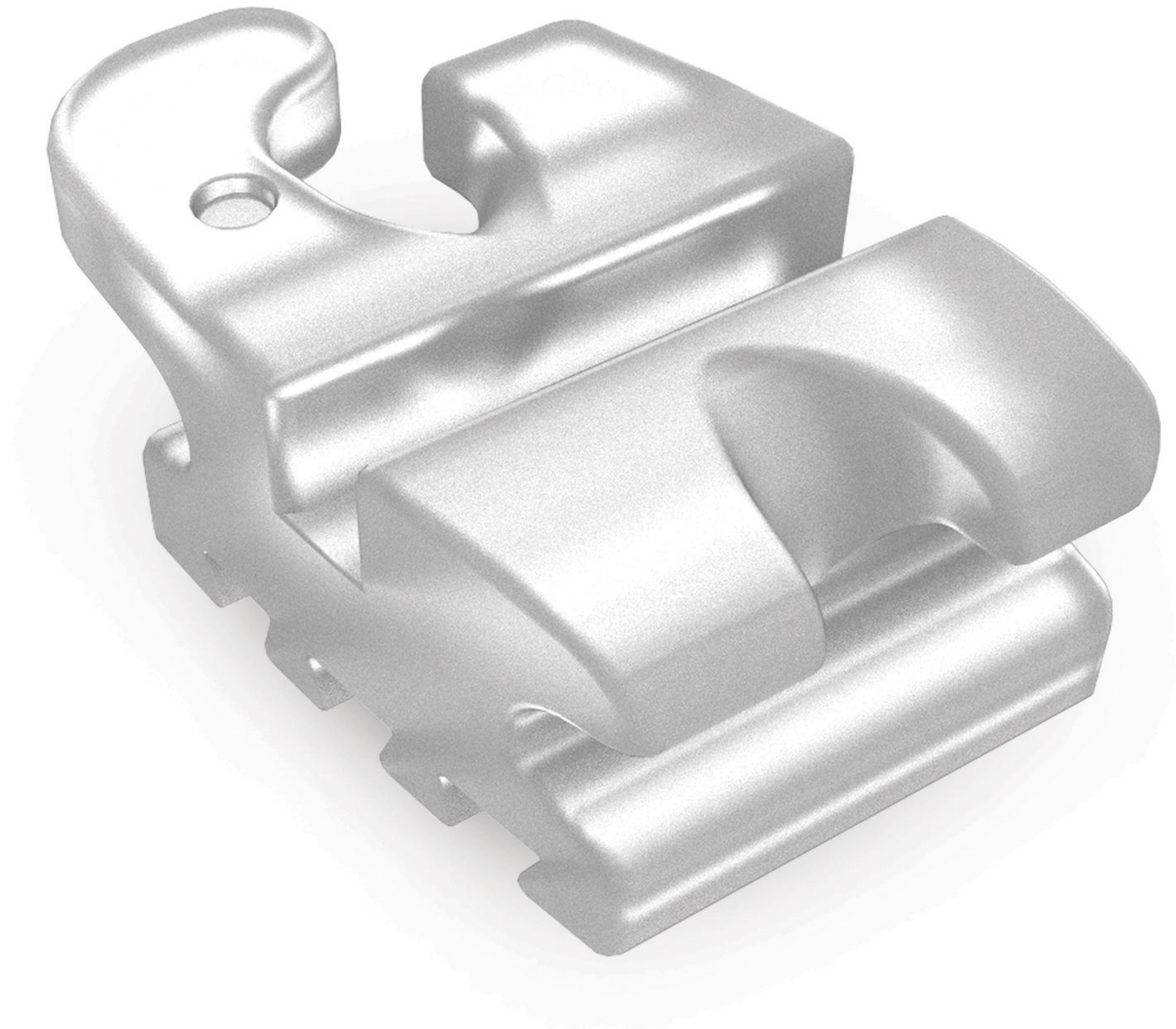
**Material:** 316 L Stainless Steel

**Base:** Integrated 1-piece design has a contoured, molded base that matches tooth anatomy. Base has printed RMO design for maximum strength.

**Prescription:** Roth, Standard Edgewise, Ricketts Original Bioprogressive

**SLOT SIZE:** .018 & .022

# Signature III



Bracket so clear!  
they're nearly  
Invisible

AESTHETIC BRACKET

**Signature III** is an aesthetic ceramic twin bracket which combines a dovetail base for reliable bonding with unique rounded features at the slot wall junctions for decreased internal bracket stresses and increased strength. This combination eliminates the common causes for failure among most ceramic brackets on the market today.

## Features

Rounded junctions in arch slot

Dovetail base design

Smooth, rounded surfaces

Torque-in-base

Color quadrant marking

## Benefits

Eliminates stress points on slot; designed for strength with ceramic aesthetics

Reliable mechanical bond, Consistent retention, Simplified debonding

Patient comfort

Provides optimal slot alignment and reduces both guesswork and chair time

Quick and accurate identification

**Material:** Extruded Polycrystalline Alumina (ceramic)

**Prescriptions:** Roth, MBT, Ricketts Bioprogressive, RMO Bioprogressive, and STD Edgewise

**Competition:** 3M Unitek Clarity™, American Ortho Radiance® Series, Ormco Inspire Ice™, Ortho Technology Reflections® GAC Mystique® MB, Opal Ortho Avex CXI Series

**SLOT SIZE:** .018 & .022



**WIRES**



## Thermal Activated Nickel Titanium Preformed Natural Arch

Thermalloy wires have the lightest tooth moving forces with a true heat-activation characteristic at open mouth temperature.

- Low tooth-moving forces, ideal for initial stages of treatment
- Thermal activated NiTi
- Excellent resiliency and exhibits true thermal performance
- Outstanding shape integrity
- Ideal for significant crowding cases
- Soft at room temperature for easy ligation
- Gentle forces for greater patient comfort
- Very responsive to chilling

### NATURAL

Sizes	Maxillary	Mandibular
.014	A07300	A07320
.016	A07301	A07321
.018	A07302	A07322

The logo for Orthonol, featuring the word "Orthonol" in a sans-serif font with a registered trademark symbol. The letter "O" is a blue circle, and a thin blue line arches over the "rth" portion of the word.

## Super Elastic Nickel Titanium Preformed Natural Arch Wire

Delivers increased forces and has superelastic properties at room temperature

- High flexibility and resiliency
- Long activation period
- Ideal for early - to mid-stage treatment
- Responsive to chilling, for patient comfort
- Moderate, consistent forces with long activation period benefitting use in early to mid-stage treatment

### NATURAL

Sizes	Maxillary	Mandibular
.012	A07011	A07031
.014	A07000	A07020
.016	A07001	A07021
.018	A07002	A07022
.016 x .016	A07004	A07024
.016 x .022	A07005	A07025
.017 x .025	A07006	A07026

WIRES



# bendaloy®

## Beta - Titanium Wire

Bendaloy® is a nickel-free titanium alloy having stiffness between NiTi and stainless steel.

- Moderate to higher forces
- Nickel-free beta-titanium
- Solid bending characteristics and excellent formability
- Ideal for mid to finishing stages of treatment

pre-formed bendaloy



NATURAL

Sizes	Maxillary	Mandibular
.016	A07121	A07130
.016x.022	A07125	A07134
.017x.025	A07126	A07135

# TRU-CHROME®

## Stainless Steel Wire

The success of chrome alloy stainless steel in orthodontics lies in the integration of mechanical properties.



- Smooth, polished surfaces for reduced friction between bracket and arch.
- Accurate forms and consistent forces for precise control
- Forces are well-suited for stabilizing position teeth
- Excellent corrosion resistance
- Ideal for mid to late stages of treatment

### NATURAL

Sizes	Maxillary	Mandibular
.014	A07251	A07271
.016	A07252	A07272
.018	A07253	A07273
.016 x .016	A07255	A07275
.016 x .022	A07257	A07277
.017 x .025	A07258	A07278

# BLUE ELGILOY®

Elgiloy® is a premium, specially-fabricated cobalt-chromium wire available in four tempers.



- Provides flexibility and control in force applications
- Longer functioning as a resilient spring wire without distortion or fatigue
- Easy heat-treated to increase physical properties
- Excellent formability for lab application

### NATURAL - BLUE ELGILOY

Sizes	(package of 10)
.016x.022	E306

# TRUFORM BANDS

## FEATURES

Firm temperament

Anatomical fit

Small gingival circumference

Rolled occusal edge

Matte finish - inner surface

Laser etched markings

Anatomical and Universal sizes

## BENEFITS

Decreases distortion; reliable strength

Creates snug fit  
Requires less band-cement  
Accurate fit reduces flex

Forms tight seal for optimal retention

Ensure tight seal and prevents cement ridging

Optimal adhesion with minimal use of band-cement

Easy size and band placement identifier

Provides more options for treatment

Material: 304L (18-8) Stainless Steel, Annealed (heat-treated).  
Temper is 70-105 kpsi

Process: Formed via cold working  
(formed without the use of heat)

Finish: Polished outer surface, Matte inner surface,  
Laser etched palmar notation and size

# MOLAR BANDS



# SCHWEICKHARDT INSTRUMENTS

Superior quality maximizes satisfaction

A premium quality instrument offers two unbeatable advantages for its users.

Premium quality instruments make the daily work more satisfying, since they allow for a more precise and ergonomic work process, they lead to better work results day to day over years and years.

Premium quality instruments are the more economic choice:

1. Top quality instruments enable their users to achieve the same work result in less time or a better work result in the same time.
2. Premium quality instruments last longer and therefore minimize investments for replacement and repair.



# Ligature and Hard Wire Cutter

## 2 in 1 instrument

Stainless Steel instrument that cuts through Ligature and Hard wires.

- Stainless Steel
- Designed for cutting wires with miniforce
- Cuts up to .022" x .028" (0.559mm x 0.711mm)
- Hard tool steel inserts

Package Contains	Order Number
1	100553



INSTRUMENTS



## Distal End Cutter with Safety Hold

- Shear cuts hard wire and then safety holds the loose distal end to prevent wire from going into tissue
- Hard tool steel insert
- Four up to .021 x .025 (0.534mm x 0.635mm) and 0.26 (.66mm) round wire
- Designed for intraoral cutting and lip safety
- Surgical stainless steel provides lasting beauty and durability
- Recommended for all non-braided wire

Description	Package Contains	Order Number
Regular beak	1	I00550
Small Beak <i>reaches the molar area easier due to the small beak</i>	1	I00554



## Cap Removal Instrument (RMO®)

### Specialized Instrument

- To remove caps from convertible tubes
- Replaceable blade provides leverage when removing cap
- Tip of blade fits securely in arch slot of tube
- Each packaged instrument includes 10 replacement blades
- Stainless steel handle and blade

Description	Package Contains	Order Number
Instrument	1	I00557
Replacement blades	5	I00559



## Step Plier Wire Bending Plier APEX SERIES

- Step plier is equipped with a double-sided offset beak for bayonet style step bend
- Creates right hand or left hand step-up or step-downs
- Box joint
- Round wire range .014" - .020" (0.356mm - 0.508mm)
- Rectangular max wire size .022" x .028" (0.559mm x 0.711mm)

Step Size	Package Contains	Order Number
.5mm	1	T00132
1mm	1	T00134

# ACCESSORIES

## Compression Springs (Open Coil)



Cost effective alternative to maintaining a large office inventory of sizes of variable (adjustable) force coil springs cut to desired length.

Length 7 (17.8mm)

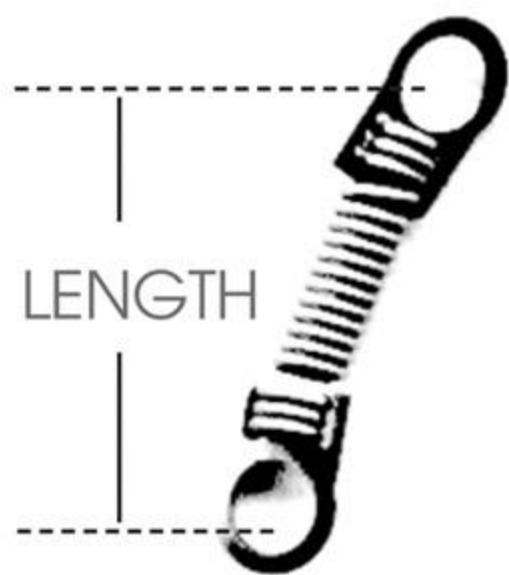
Package contains 3 (53cm)

## Ligature Wire, Tru-Chrome SS - Dead Soft



.008"  
.009"  
.010"  
.011"  
.012"

## Extension Springs (Closed Coil)

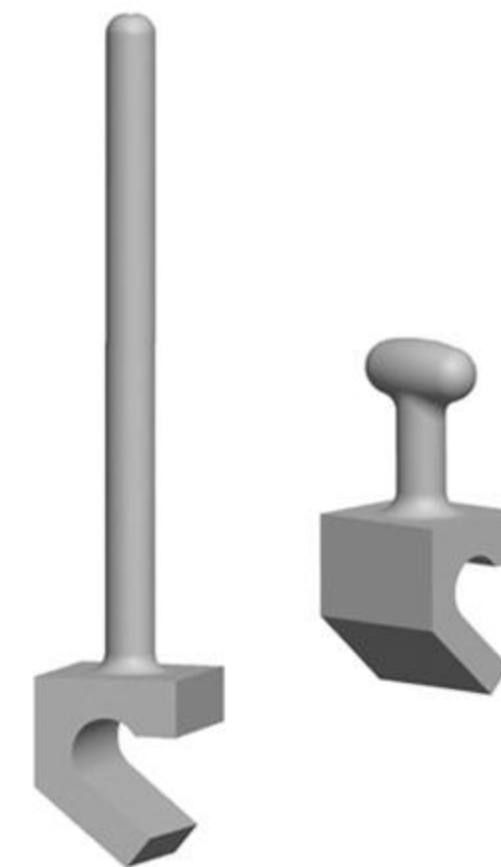


Stainless steel eyelets are attached to each end of the spring to easily engage hooks. Variable (adjustable) coil spring.

Length 9mm (17.8mm)

Package contains 10

## Crimpable Hooks



Designed to be crimped on to rectangular arch wire sizes (.016x .022, .017x .025 and .019 x .025)  
Use to convert an arch wire into a distalization wire or a closing arch loop



[www.rmortho.com](http://www.rmortho.com)  
2165 Earlywood Drive, Franklin, IN 4613, USA

Exclusive Philippine Distributor:



768 Gen. Malvar St., Malate,  
Manila, Philippines

+632 8526 - 3870 | +632 8526 - 2911  
[customerservice@prosapac.com](mailto:customerservice@prosapac.com)  
[www.pros-apac.com](http://www.pros-apac.com)

follow us!

